



# TANG PAINTING IN PRACTICE

HAA 10/17/2017

# Class Survey

- What has been your favorite day of class so far? Why?
- In terms of the structure of the class, would you change anything? Do you prefer more lectures or discussions? Other activities? What about the organization – thematic or chronological? More or fewer assessments (quizzes/tests)?
- Which reading so far have you found most interesting and/or helpful?
- What kind of art would you like to hear more about? Less about?

## **Six Principles (Canons) of Chinese Painting, Xie He (c. 500)** (from *Guhua Pinlu* - Ancient Painter's Classified Record)

1. Spirit Harmony/Resonance, which means Life's Motion (Waley); animation through spirit resonance (Soper)
2. Bone method, which is a means of using the brush (Waley); structural method in use of the brush (Soper)
3. Fidelity to object in portraying form (Soper)
4. Suitability to type in applying color (Acker)
5. Proper planning in placing of elements (Soper); Division and Planning (e.g. Composition; Acker)
6. Transmission by copying (Acker), That by copying, the ancient models should be perpetuated (Shakanishi)

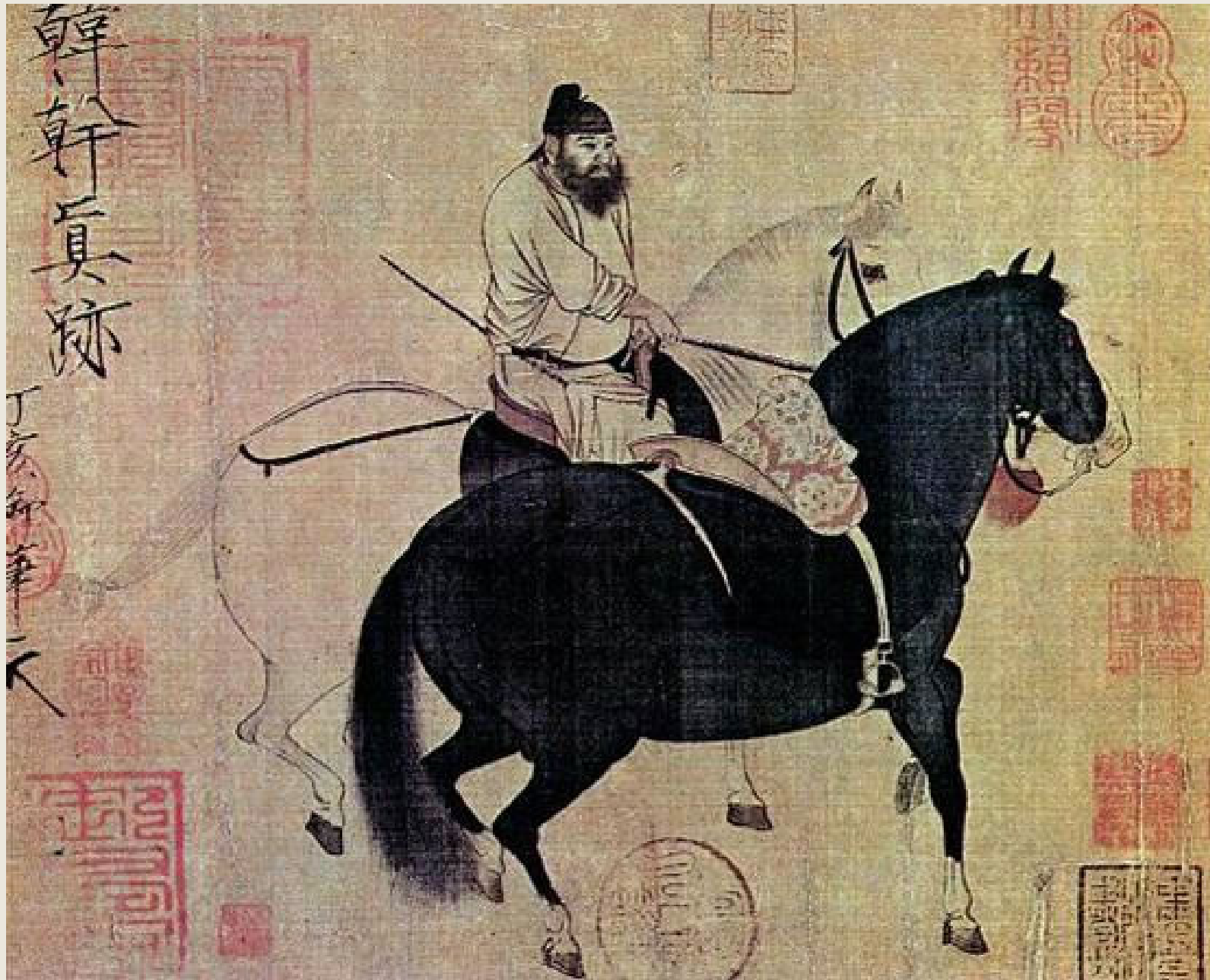
# Types of Tang Painting



Horse  
Painting

Figure  
Painting

Landscapes



Han Gan, *Horses and Central Asian Groom*, Tang dynasty, ink on paper



KEY WORK: Han Gan, *Night-Shining White*, Tang Dynasty, ink on paper



Close up of *Night-Shining White*

韓幹以畫馬擅名千古其毛骨骨相隨意所匠冥會通神  
 堂閣張彥遠名畫記去當日修年明堂於園有五花駝照  
 寂向每神法以不似一見真蹟為憾且未卜漏落何所  
 也也馬以黃公望富善山居壽圖所售者黃蹟固屬偽作  
 而向幹以畫照夜白卷神采飛騰宛觀佛父名種為幹  
 手筆無疑因命購莊之既以在猴儂風韻而因王得羊  
 適色及俊不何云

乾隆丙寅仲冬月望子五日御識

韓幹照夜白

不知誰向車前後應有人從窈內窈乍憶黃沙紫

此今秋願仗吳畫寫白也頃得韓幹是固覺筆力更上一頭地幅亦  
 為貨古潤可愛因書於右嘉平共生以又識

紹興戊午鄧林向子謹  
 同觀于凝香閣

南唐押署所識物

多真吳人吳說

韓幹畫照夜白

於古閑空無而今采識精獨  
 嘶霜月白物立翔風寒骨  
 志凌空欲無心憶錦雞丹青  
 曾霜老盡肉也應難  
 乾隆丙寅仲冬御題



Numerous red seals in various shapes and sizes, including square, rectangular, and circular ones, are stamped across the painting and surrounding text. Some legible characters include '韓幹', '照夜白', '乾隆', '鄧林', and '凝香閣'.



KEY WORK: Zhang Xuan, *Court Ladies Preparing Silk* (copy), original - Tang Dynasty, silk and paint



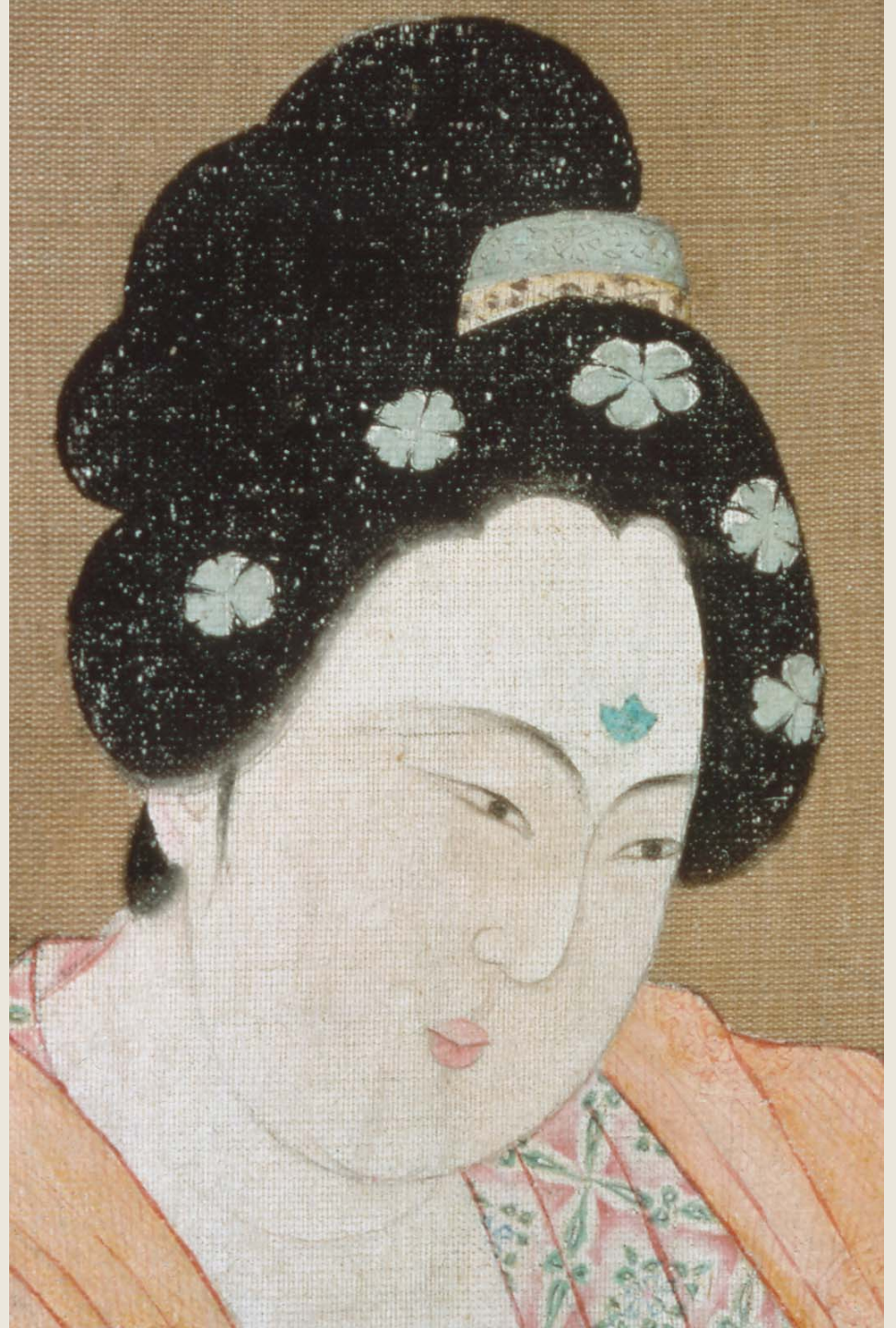


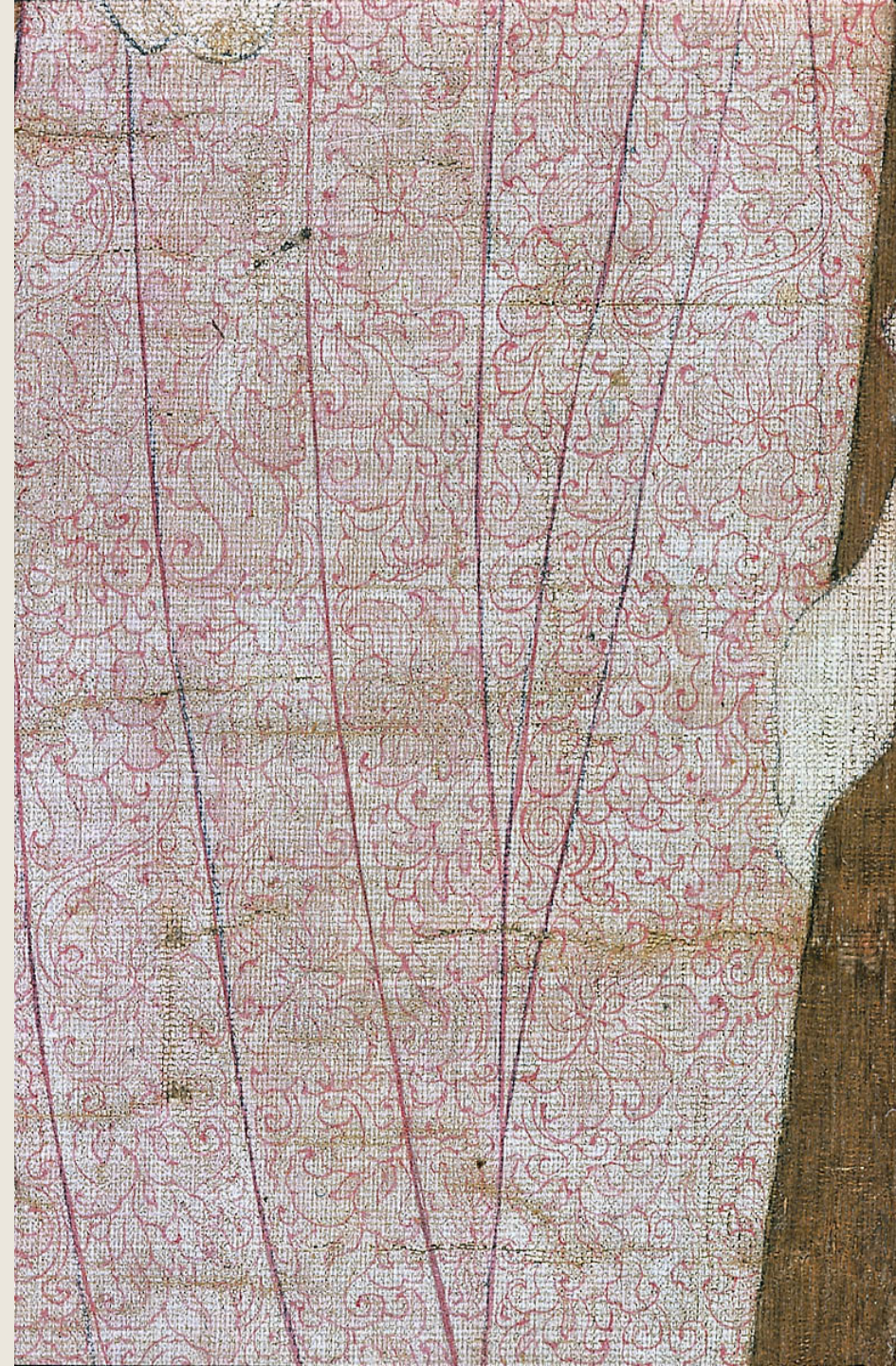


Tang women illustrated in scene from the Tomb of Princess Yongtai (mid Tang dynasty), mural on wall



Detail showing back of  
woman's neck







Zhou Fang, *Court Women With Flowers in Their Hair* (copy),  
original - Tang Dynasty, ink on silk



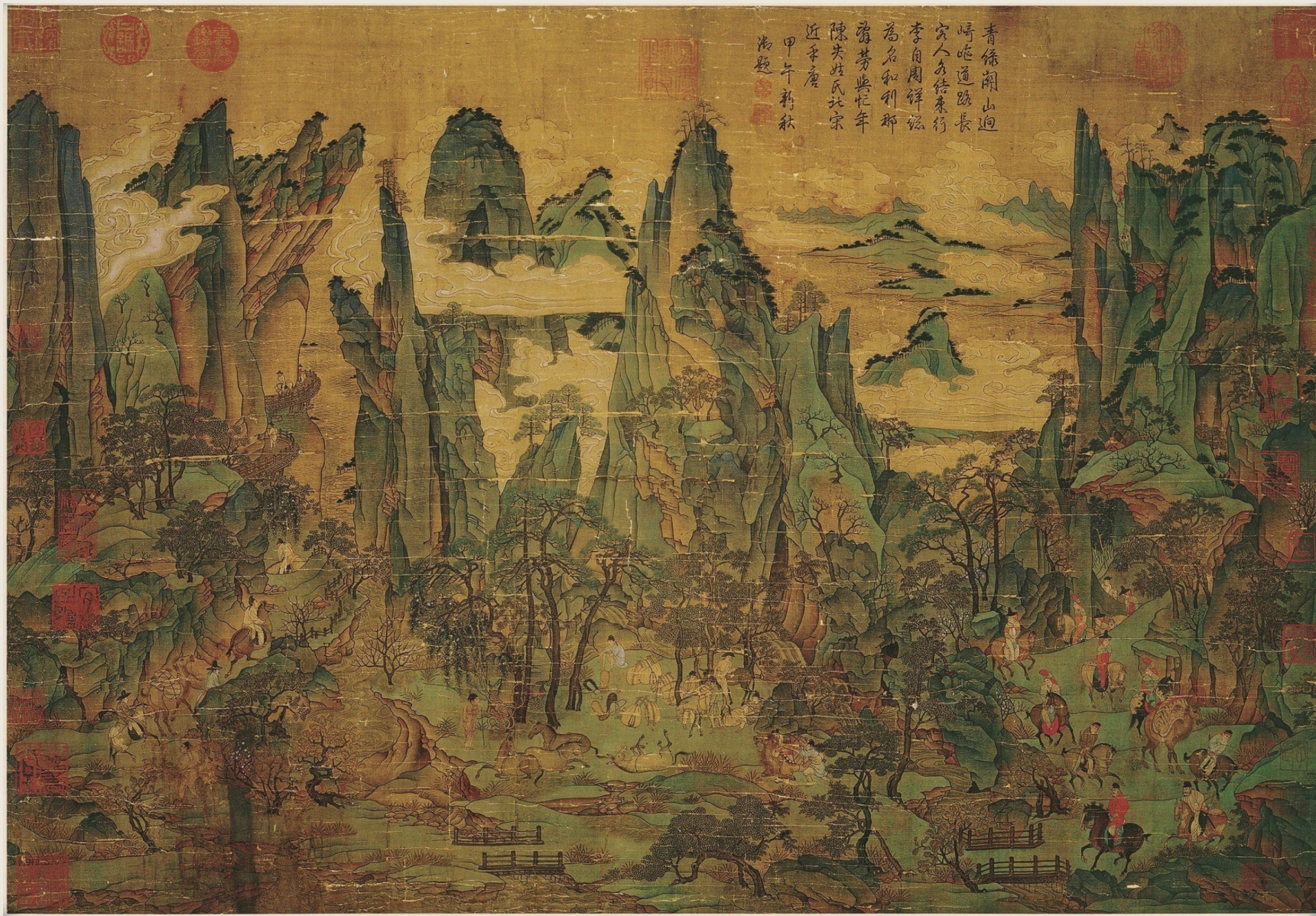
Close-up of  
*Court Women  
With Flowers in  
Their Hair*



Yan Liben, *Thirteen Emperors Scroll* (copy), original – Tang dynasty, silk and paint



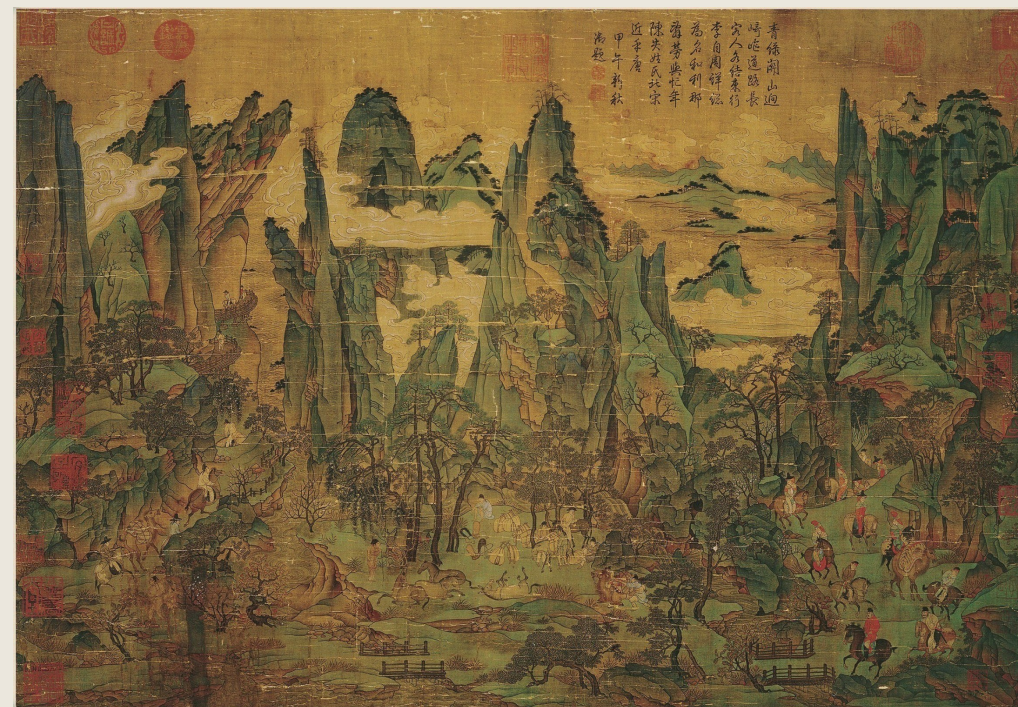


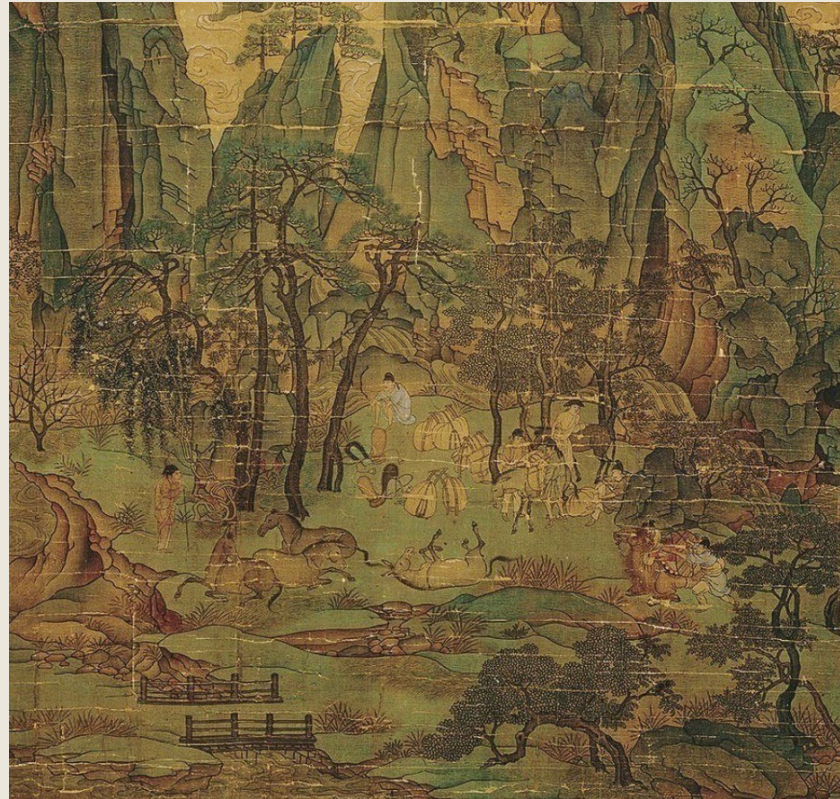


KEY WORK: Li Zhaodao, *Emperor Minghuang's Flight to Shu* (copy), original - Tang Dynasty, silk and paint



Mural at Dunhuang (Tang Period); *Pilgrim Returning Home*





Details from *Emperor Minghuang's Flight to Shu*, showing same characters at different times